

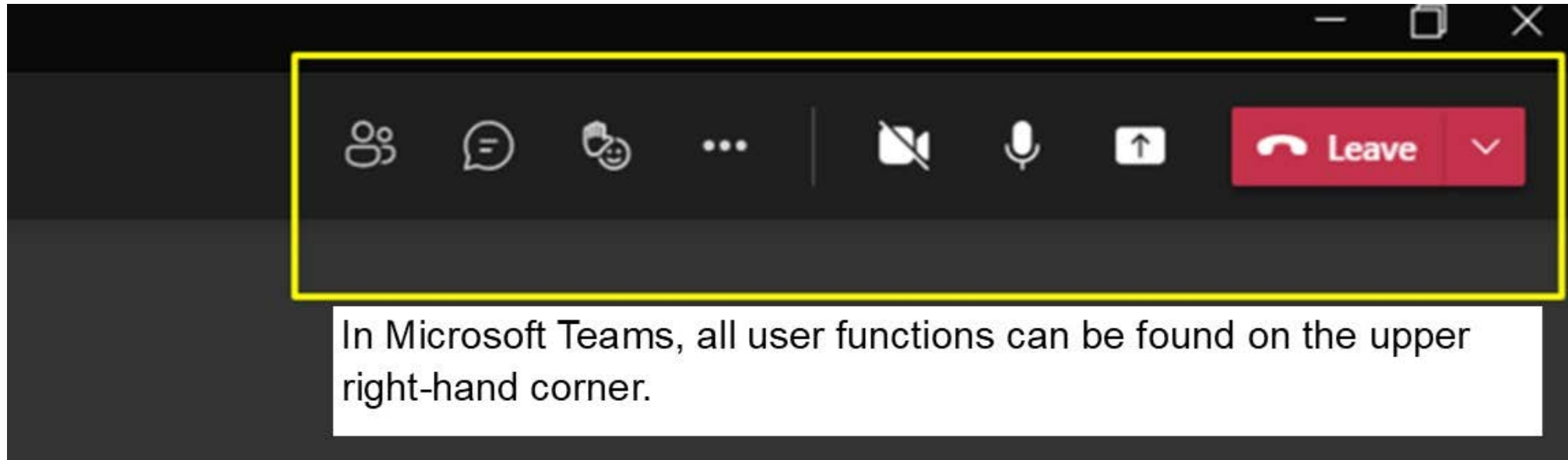
TEMPORARY PEDESTRIAN PROCESS FACILITY AT CALEXICO WEST PORT OF ENTRY IN CALEXICO, CALIFORNIA ENVIRONMENTAL ASSESSMENT

Osmahn Anthony Kadri

NEPA Program Manager

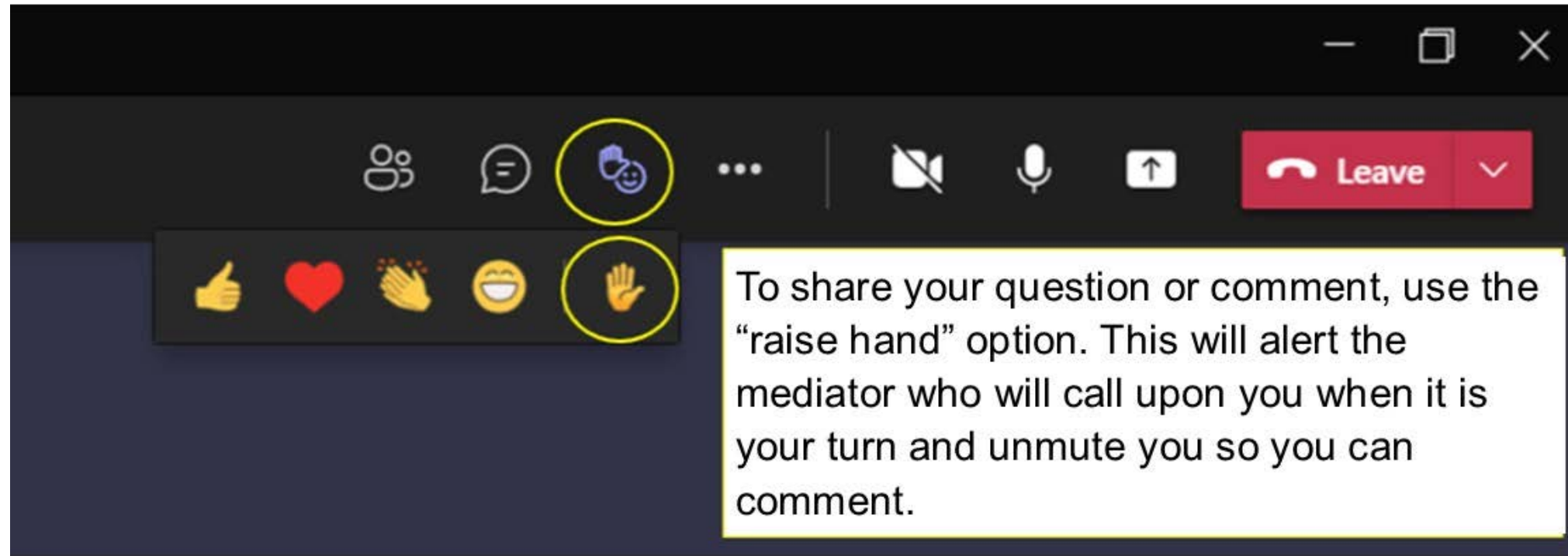
Virtual Public Meeting, August 23, 2022

Accessing Teams “Raise Hand” and “Chat” functions for Q&A session



In Microsoft Teams, all user functions can be found on the upper right-hand corner.

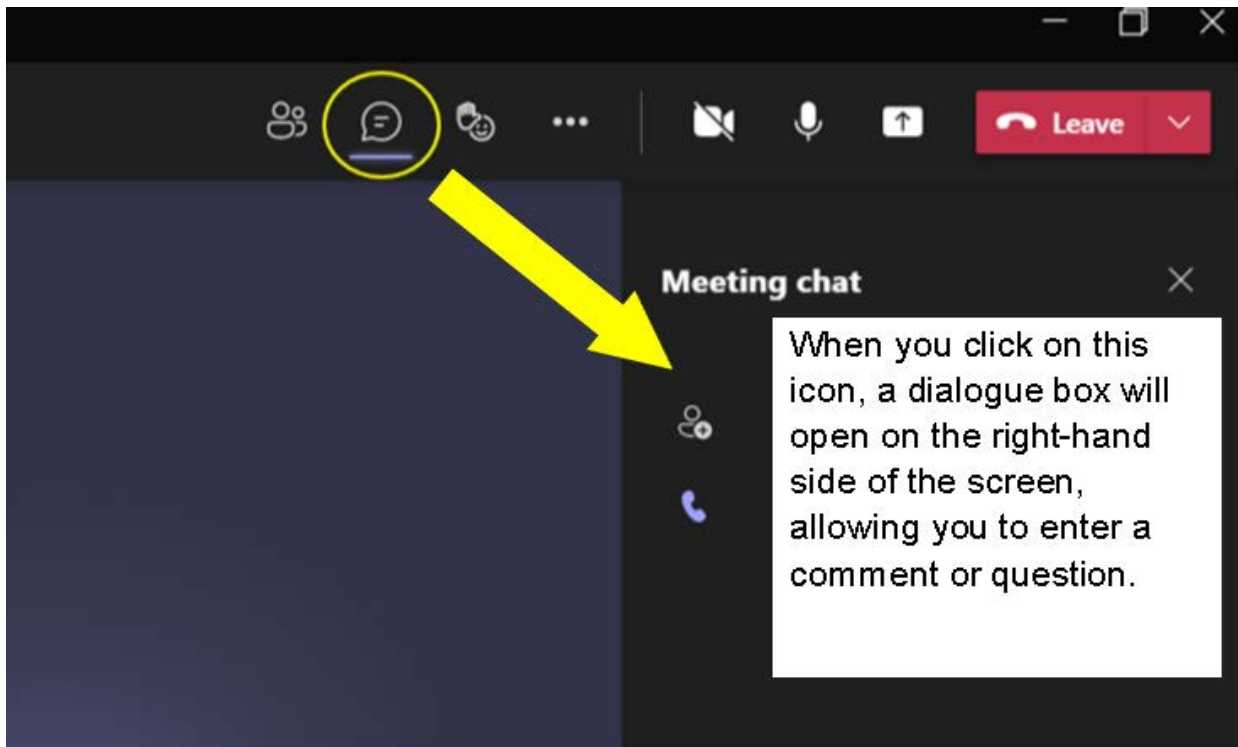
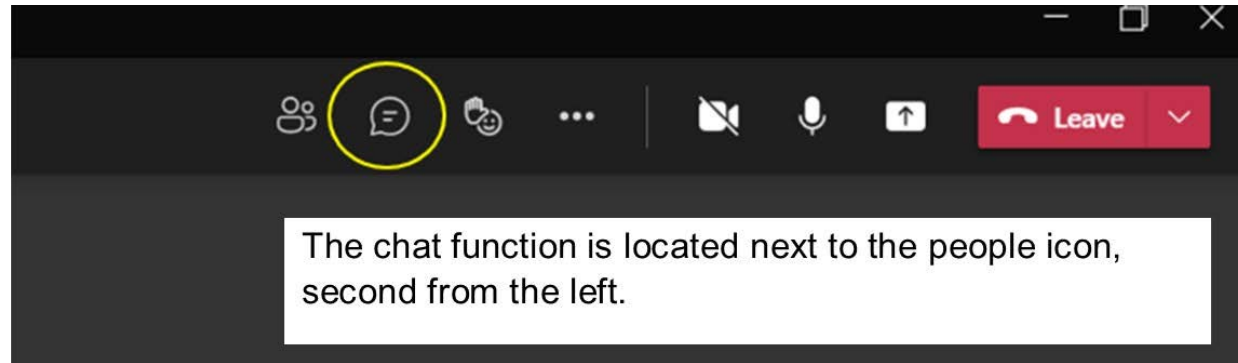
How to use “Raise Hand” function during Q&A session



The image shows a Zoom meeting control bar. The 'Raise Hand' icon, which depicts a hand with a raised index finger, is highlighted with a yellow circle. Below the main control bar, a secondary menu is open, also highlighting the 'Raise Hand' icon with a yellow circle. To the right of the icons, a white text box provides instructions: 'To share your question or comment, use the “raise hand” option. This will alert the mediator who will call upon you when it is your turn and unmute you so you can comment.'

To share your question or comment, use the “raise hand” option. This will alert the mediator who will call upon you when it is your turn and unmute you so you can comment.

How to use “Chat” function



Meeting Agenda

- Introduction to GSA-PBS
- Environmental Assessment Objectives
- Project Purpose and Need
- Proposed Action
- Alternatives
- Resources Fully Analyzed
- Impacts
- Mitigation
- Finding of No Significant Impacts
- How to submit comments
- Q&A session
- Closing

Introduction to Public Building Services (PBS) of GSA

- Serves other civilian federal agencies, who use GSA programs to provide workspace, furnishings at best value to the American taxpayer
- Acquire space through new construction, leasing, maintaining federal properties nationwide
- Own, lease more than 8,800 assets
- Maintain more than 370 million square feet of workspace for 1.1 million federal employees
- Preserve more than 500 historic properties

Environmental Assessment Objectives Under NEPA

- Provide sufficient evidence and analysis for determining whether to prepare an Environmental Impact Statement (EIS) or a Finding of No Significant Impact (FONSI);
- Comply with the National Environmental Policy Act (NEPA) of 1969
- Provides interested public, agencies opportunity early in planning process to:
 - Provide input
 - Identify issues
 - Offer solutions
- GSA is lead agency for this EA

Environmental Assessment objectives Under NEPA

- GSA has determined that an Environmental Assessment (EA) would need to be prepared to evaluate the significance of potential impacts resulting from proposed project
- Council on Environmental Quality (CEQ) regulations provide guidance on the preparation of EA and define significance

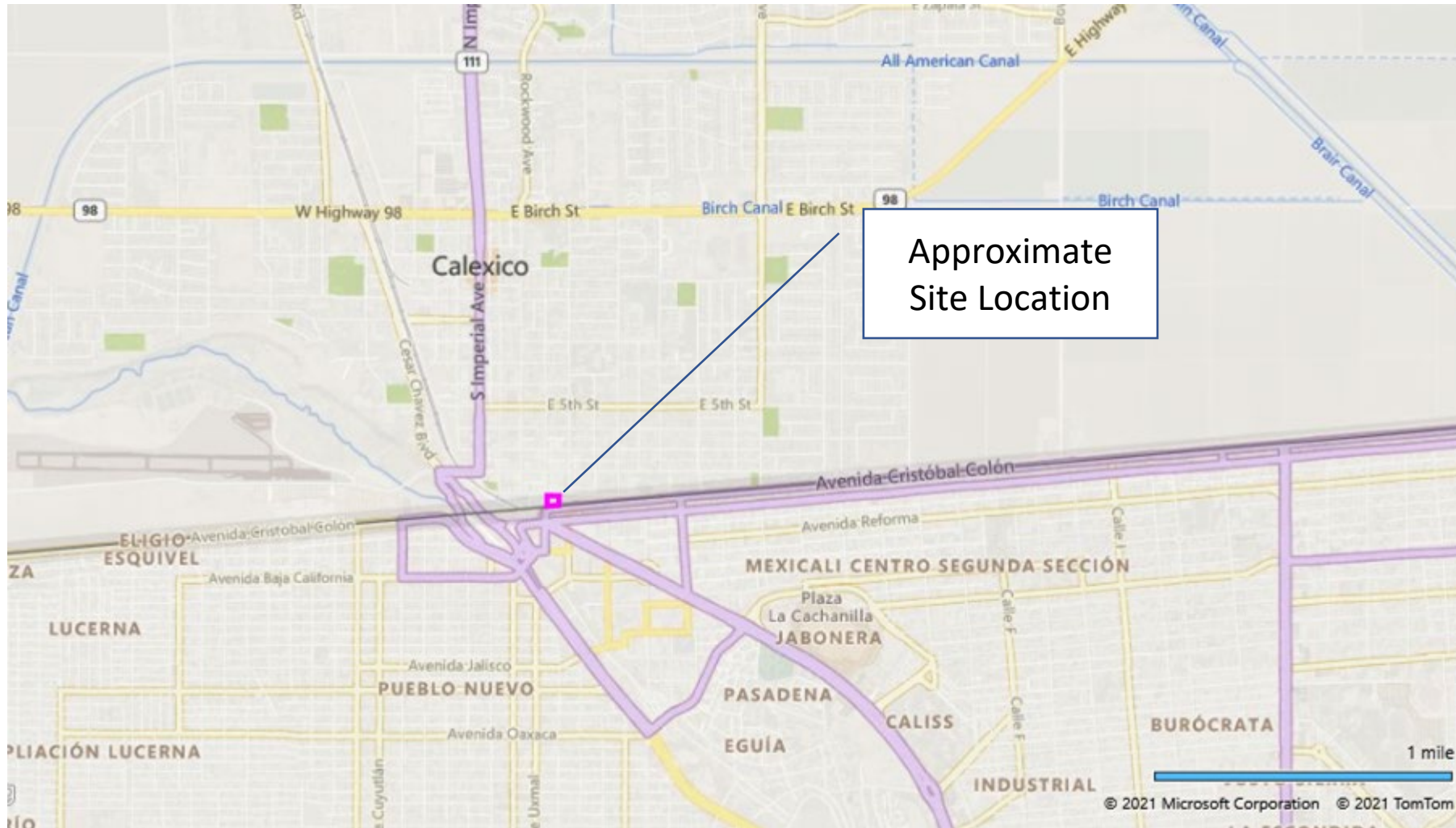
Some Environmental Resources Considered in this EA

- Air Quality/Climate Change
- Cultural and Paleontological Resources
- Environmental Justice
- Farmlands – Prime or Unique
- Floodplains
- Land Use
- Migratory Birds
- Minerals
- Native American Religious Concerns
- Noise and Sensitive Receptors
- Recreation
- Public Health and Safety
- Socioeconomic
- Soils
- Threatened or Endangered Species
- Travel Management
- Vegetation
- Visual Resources
- Wastes – Hazardous or Solid
- Water Quality – Drinking or Ground
- Weeds – Invasive and Non-native
- Wetlands/Riparian Zones
- Wild and Scenic Rivers
- Wild Horses/Burros
- Wilderness
- Wildlife

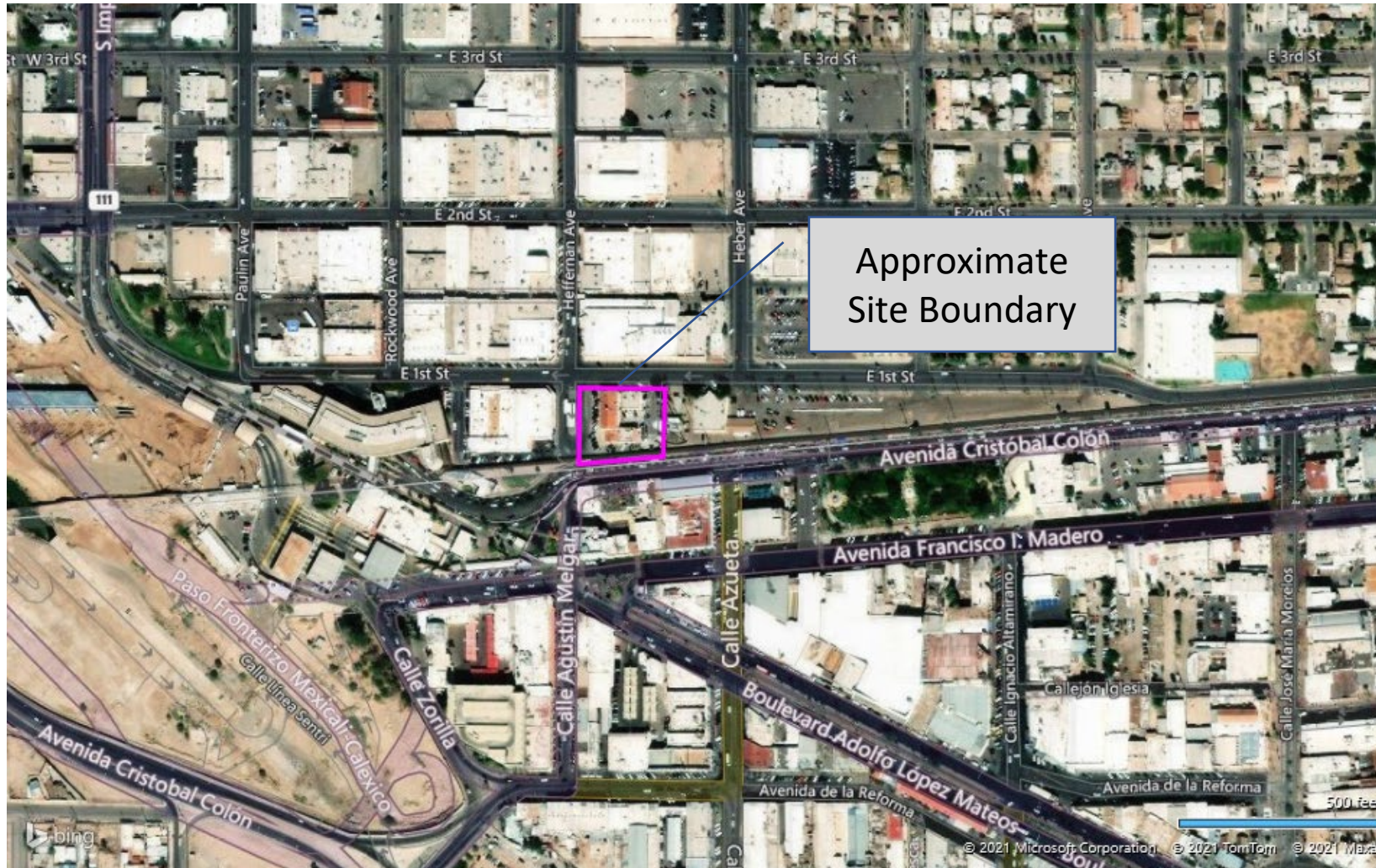
Environmental Assessment process overview



Calexico West Land Port of Entry Temporary Pedestrian Process Facility



Calexico West Land Port of Entry Temporary Pedestrian Process Facility



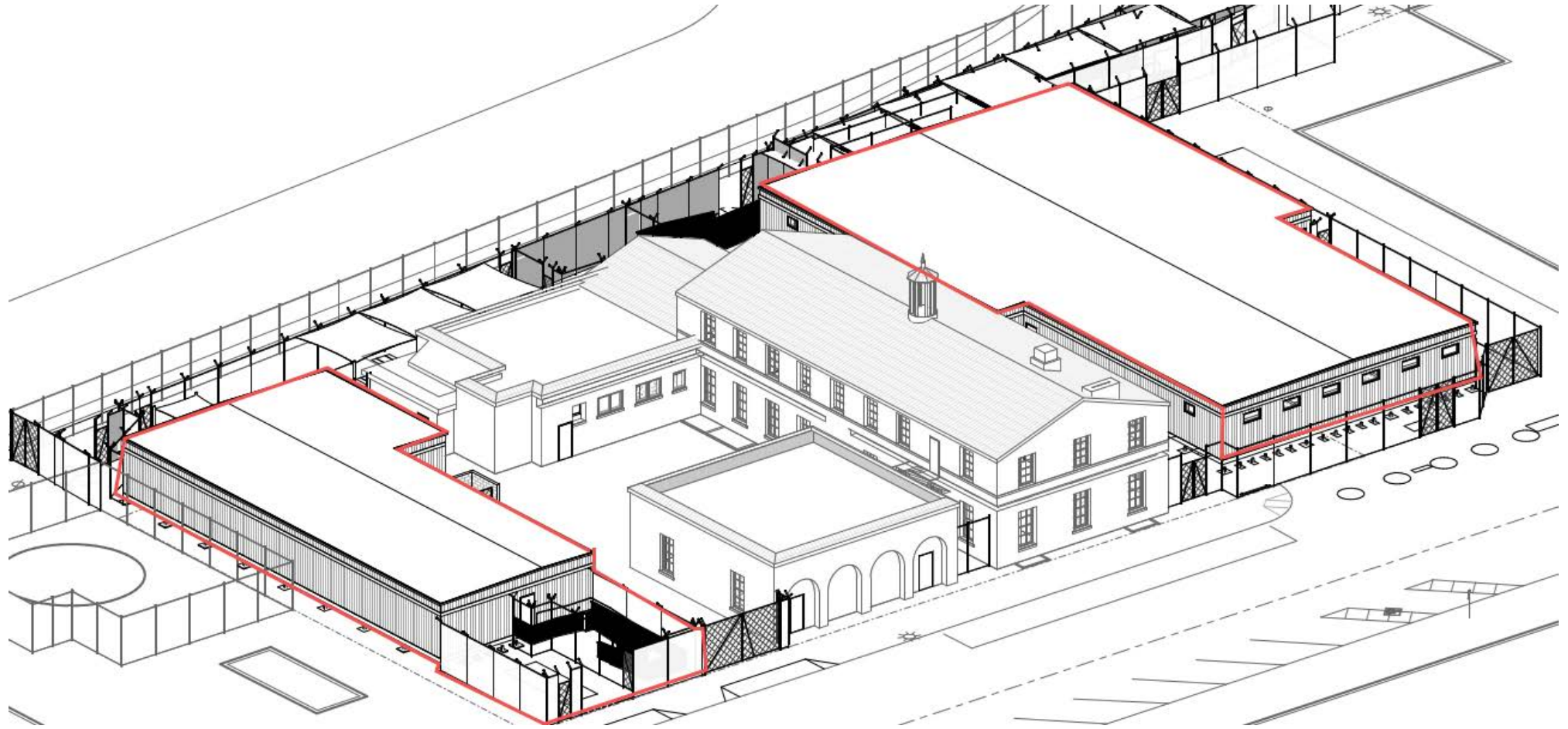
Calexico West LPOE Temporary Pedestrian Process Facility Project

- Purpose and Need
 - While current facility/existing structures are demolished and a new structure constructed, a temporary facility is needed to act as a pedestrian processing facility to be used by the United States Customs and Border Protection and partner agencies in Calexico, California
- Objective
 - Ensure continued services for those crossing between the United States of America and Mexico while new facility is installed

Proposed Project Information

- Proposed temporary facility located adjacent to Historic Customs House at 340 East 1st Street
- Temporary, premanufactured modular building facility anticipated to be located on Heffernan Road
 - South of East 1st Street
 - West of Historic Customs House
- Facility requires temporary acquisition of Heffernan Road to south of East 1st Street

Proposed Building Rendering



Proposed Project Information

- Includes installation of one-story, pre-manufactured modular building
- Structure will be used for the purpose of pedestrian processing at the Land Port of Entry
- Two facilities will be approximately 8,804 square feet
- Includes:
 - Fire lane to west
 - Shaded pedestrian ramps leading to/from building
 - Pedestrian pick up/drop-off areas on north side
 - Secured sally port
 - Secured outdoor shaded ancillary area

Proposed Project Information

- Interior of building includes:
 - Wait areas
 - Administrative offices
 - Interview rooms
 - Property storage
 - Inspection areas
 - Processing areas
 - Restrooms

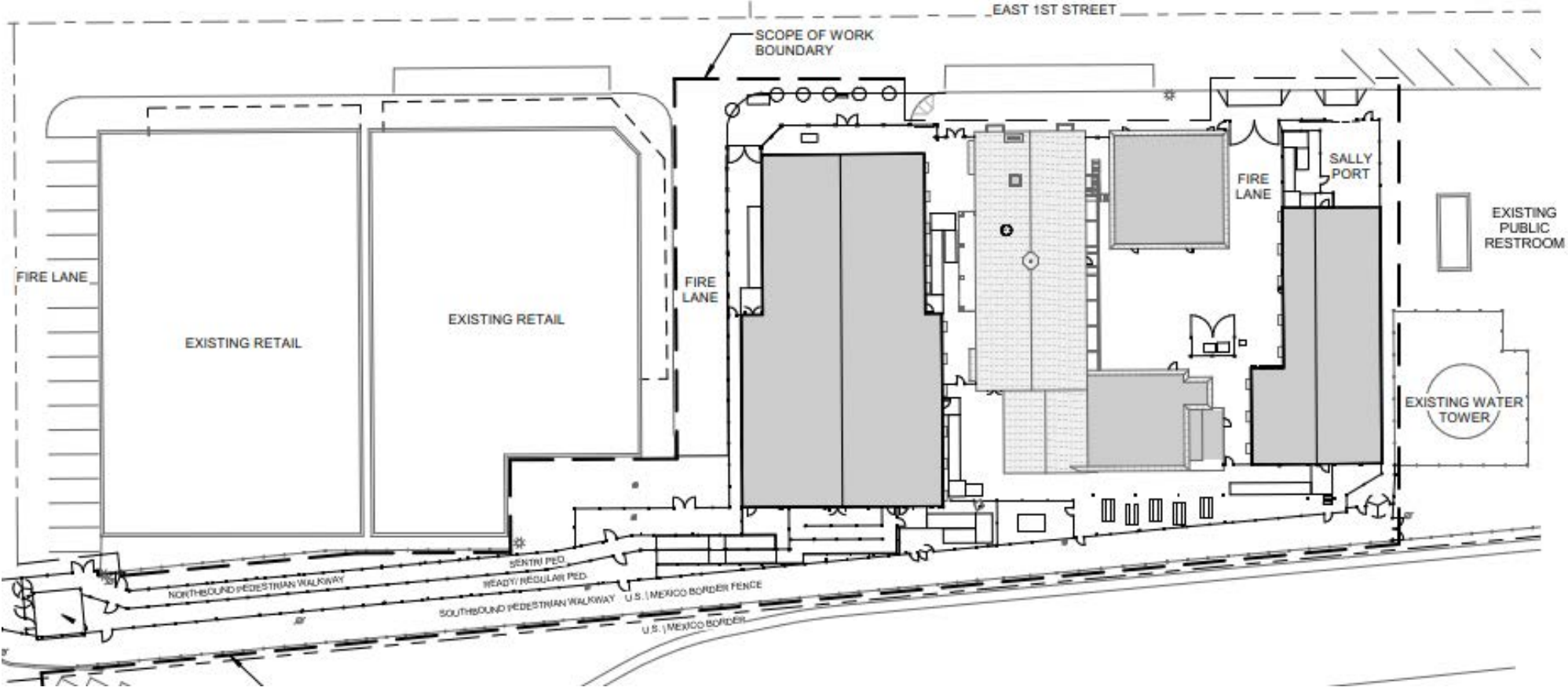
Preferred Alternative

- Construction of new one-story pre-manufactured modular building for pedestrian primary, benefit, and secondary processing. Work includes pre-manufactured ramps.
- Temporary acquisition of 7,040 square feet of Heffernan Avenue, between East 1st Street and the border boundary between the United States and Mexico.
- Renovation of existing two story over basement building to house administration offices for CBP and Immigration and Customs Enforcement (ICE) agencies. No change in occupancy, use, and floor area. The existing building is listed on the National Register of Historic Places.
- Construction of new secured covered pedestrian walkway for northbound and southbound travels at border crossing. Work includes pre-manufactured ramps.

Preferred Alternative Continued

- Construction of new concrete masonry unit trash enclosure.
- Construction of new shade structures for pedestrian walkways and open spaces.
- Site work includes grading improvements, new paving, new utilities and new fencing & gates.
- Off-site work includes driveway/curb cut at public right of way on 1st street.
- No change in personnel staffing

Preferred Action Alternative Proposed Site Plan



“No Action” Alternative

- Assumes temporary facility would not be built
- Operations in current facility would continue under current conditions

Significance Impact Definitions

Land



Conversion of current land use of property that would impact use and viability of adjacent properties by current and future land owners.

Water



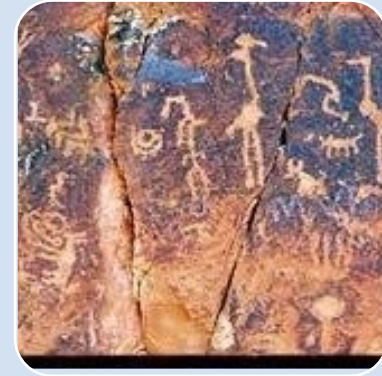
Major disturbances in the natural flow, discharge, and recharge of water resources within the project or adjacent areas. This includes the potential for a substantial loss, degradation, or fragmentation of wetland habitat

Air



Emissions that result in a considerable net increase of any criteria pollutant within the Imperial County Non-Attainment Area that is not in compliance with the State Implementation Plan.

Cultural



Ground disturbing activities that may adversely affect known or unidentified cultural resources within the project area.

Significance Impact Definitions Continued

Socio-Economic



Disproportionate impacts to either low-income, minority, or individuals with limited English proficiency including limited access to social services, community resources, transportation, and economic advancement as well as impacts directly or indirectly to their health.

Traffic



Modification or increase of traffic that would cause a substantial decrease mobility, increase commuting time, or decrease safety.

Noise



The potential to result in noise levels in exceedance of 65 decibels (dB) for a prolonged duration of time, impacting the quality of life of those within the residential areas.

Climate Change



Emissions that result in a considerable net increase of green house in such a quantity that the purpose and need of a project will be impacted or other resources

Resources Not Fully Analyzed

Coastal Resources

- Not located within a state identified in the Coastal Zone Management Act or Coastal Barriers Resource Act

Community Services

- Emergency response services not anticipated to be needed during construction

Aesthetics

- Structures will be designed with GSA Design Criteria and will match existing structures

Biological Resources

- No flora or fauna were identified

Resources Not Fully Analyzed Continued

Threatened and Endangered Species

- Critical habitat for any potential species listed not identified on site

Floodplain

- Project area located outside the 100 & 500- year floodplain and there will be no change in impervious cover (already at 100% cover)

Hazardous Material

- Phase 1 was conducted and no known hazardous materials were present within or around the site

Potential Effects Of Preferred Alternative

Land Resource

- Short-term, direct, and adverse impact is anticipated since Heffernan Avenues use will be modified from transportation to facility.
- Impact is less than significant.

Water Resources

- Short-term, direct adverse impacts are anticipated on surface water resources
- During construction, soils will be disturbed, increasing erosion potential
- Impacts are less than significant.

Air Quality

- Short-term, direct adverse impacts due to the increase emissions from heavy equipment used during the construction.
- Impacts are less than significant.

Cultural Resources

- No impact anticipated based upon response received from the California State Historic Preservation Office.

Potential Effects Of Preferred Alternative Continued

Socio-Economic / Environmental Justice

- Short-term, indirect, beneficial impact as a result of renovation activities via incidental spending by renovation workers / craftsmen and the purchase of locally available materials.
- Impacts are less than significant.

Traffic

- Short-term, direct, adverse impacts due to the temporary acquisition of Heffernan Avenue to traffic departing the commercial building to the west and use by transit company.
- Impacts are less than significant.

Noise

- Short-term, direct, adverse impacts due to the noise associated with construction equipment.
- Impacts are less than significant.

Climate Change

- Short-term, direct adverse impacts due to the increase emissions from heavy equipment used during the construction.
- Impacts are less than significant.

Best Management Practices

- Air quality:
 - Use appropriate dust suppression methods
 - Shut off equipment when not in use
 - Visually monitor all construction activities regularly
- Cultural:
 - If artifacts are identified, work should cease and California SHPO office contacted
- Noise:
 - All equipment fitted with noise reducing features
 - Construction activities limited to daytime hours
 - Summer hours: 7 am – 9 pm
 - Winter hours: 8 am – 6 pm
- Climate Change:
 - Implementation of BMPs to reduce emissions:
 - Proper engine maintenance
 - Limited idle time

How to Submit Public Comments

- Public comments, questions accepted via:
 - Email: osmahn.kadri@gsa.gov
 - Mail:
 - Attn: Ms. Bianca Rivera
 - 355 South Euclid Avenue, Suite 107
 - Tucson, AZ 85719
- Deadline: **September 26, 2022**
- Public notification regarding project will continue:
 - In *Calexico Chronical*
 - On project website: <https://www.gsa.gov/about-us/regions/welcome-to-the-pacific-rim-region-9/land-ports-of-entry/calexico-west-land-port-of-entry/calexico-west-lpoe-environmental-review>

Q&A session

- After meeting, email osmahn.kadri@gsa.gov with questions, comments